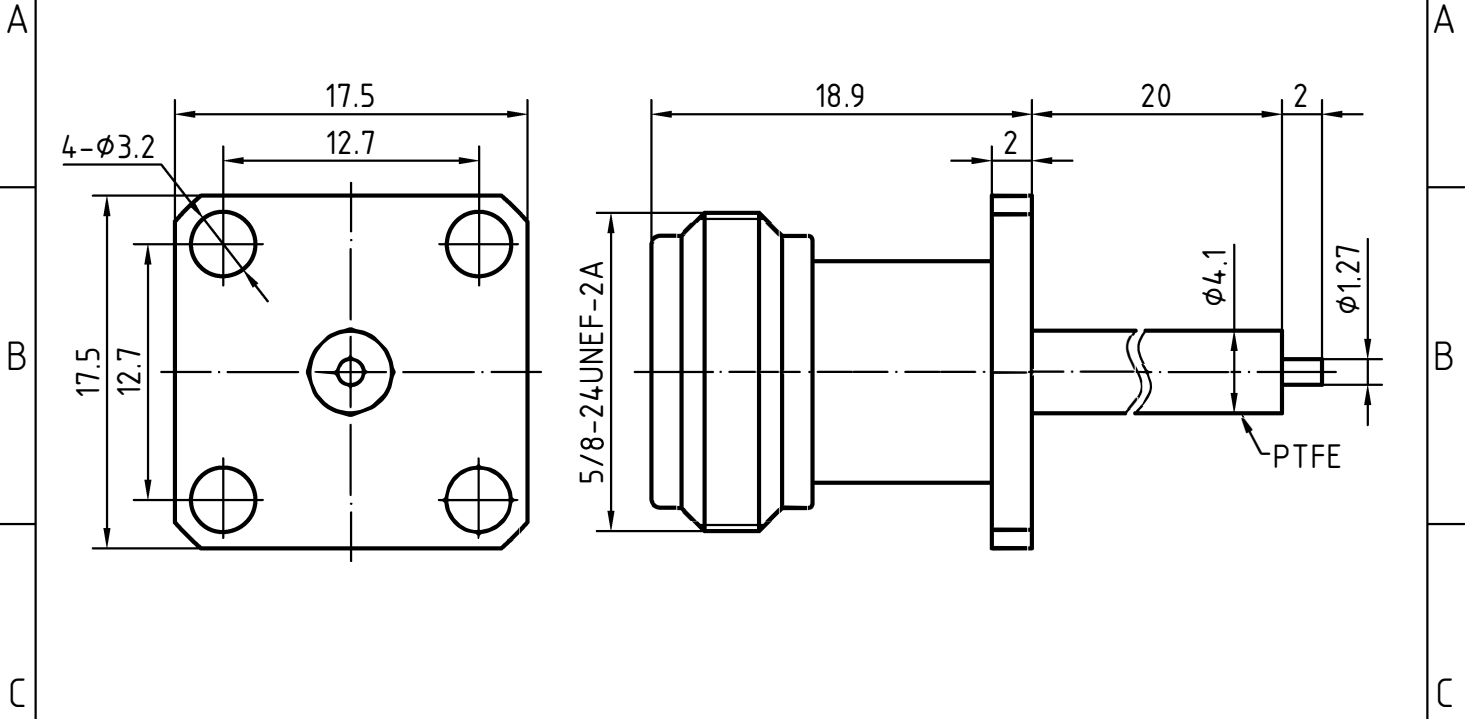
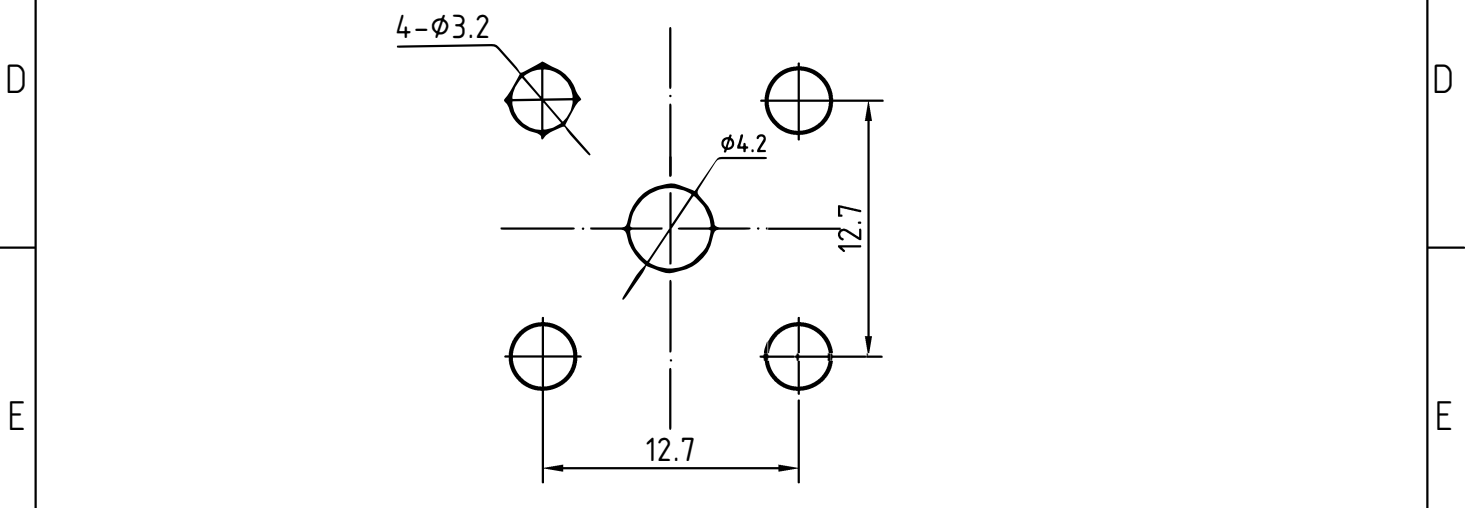


DRAWING



MOUNTING HOLE



3	1	Body	Brass/Nickel plated
2	1	Insulator	PTFE
1	1	Center contact	Phosphor bronze/Gold plated

Itemref	Quantity	Title/Name, designation, material, dimension etc	Article No./Reference
---------	----------	--	-----------------------

Designed by Xio Xang	Checked by Jing Lo	Approved by Jing Chan	File name N-232141(17.5)	Date 07.03.04	Scale 3 : 1
-------------------------	-----------------------	--------------------------	-----------------------------	------------------	----------------

	N-232141(17.5)	
	Edition 1.0	Sheet 1/1

CHARACTERISTICS

DESCRIPTION:

N Type female FL connector

Electrical data:

<i>Impedance:</i>	50 ohm
<i>Frequency range:</i>	DC to 11 GHz
<i>VSWR:</i>	$\leq 1.10 + 0.02 \times f \text{ [GHz]}$
<i>Insertion loss:</i>	$\leq 0.35\text{dB}$, DC-8GHz
<i>Insulation resistance:</i>	$\geq 5000\text{M}\Omega$
<i>Test voltage:</i>	2500 V rms
<i>Working voltage:</i>	1400 V rms
<i>Contact resistance:</i>	
1). Centre contact:	1.0 m Ω
2). Outer conductor:	0.25 m Ω
<i>Power handling</i> (at 20 °C, sea level, VSWR 1.0):	1000 W @ 1 GHz 700 W @ 2 GHz

- Limitations are possible due to the used cable type -

Environmental data:

<i>Temperature rating:</i>	-55 ° C to +155 ° C
<i>52/95/EC (RoHS):</i>	Compliant

Mechanical data:

<i>Mating cycles:</i>	≥ 500
<i>Center contact captivation(axial):</i>	$\geq 28 \text{ N}$
<i>Coupling nut retention:</i>	$\geq 450 \text{ N}$
<i>Coupling test torque:</i>	$\leq 1.7 \text{ Nm}$
<i>Recommended torque:</i>	0.7 Nm to 1.1 Nm

Suitable cables:

N/A