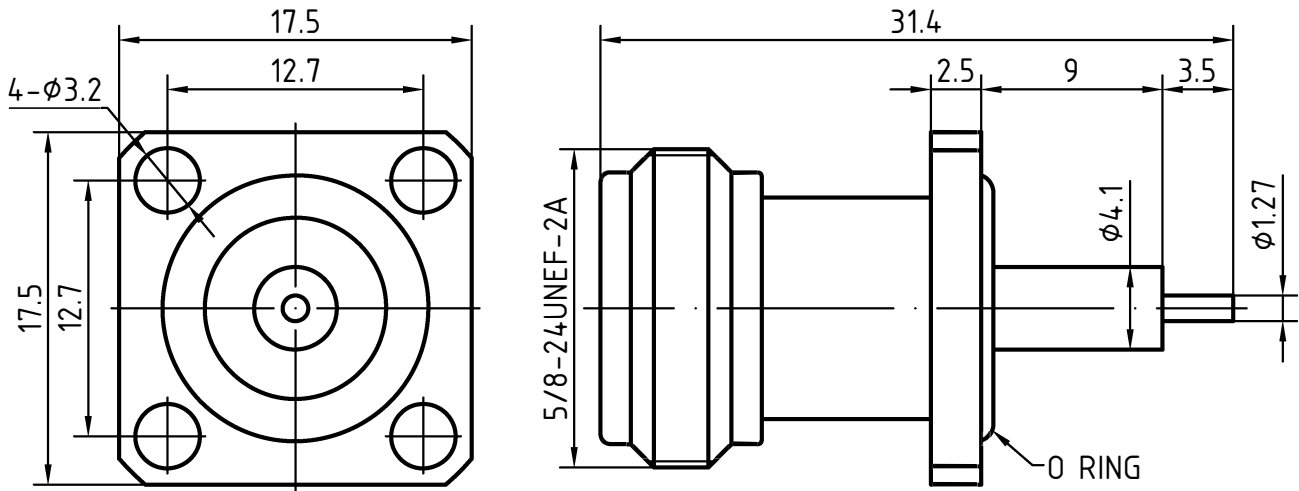


DRAWING

A

A



B

B

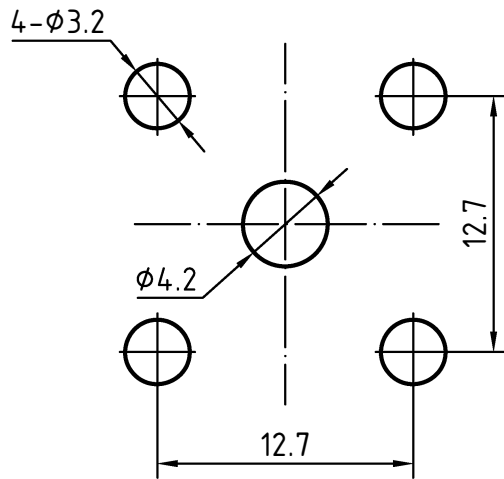
C

C

MOUNTING HOLE

D

D



E

E

4	1	O ring	Silicone rubber
3	1	Body	Brass/Nickel plated
2	1	Insulator	PTFE
1	1	Center pin	Phosphor bronze/Gold plated

Itemref	Quantity	Title/Name, designation, material, dimension etc	Article No./Reference
---------	----------	--	-----------------------

Designed by Xio Xang	Checked by Jing Lo	Approved by Jing Chan	File name N-232142(17.5R)	Date 10.11.18	Scale 3 : 1
-------------------------	-----------------------	--------------------------	------------------------------	------------------	----------------

	N-232142(17.5R)	
	Edition 1.0	Sheet 1/1

F

F

CHARACTERISTICS

DESCRIPTION:

N Type female FL connector

Electrical data:

<i>Impedance:</i>	<i>50 ohm</i>
<i>Frequency range:</i>	<i>DC to 11 GHz</i>
<i>VSWR:</i>	<i>$\leq 1.1 + 0.01 \times f$ [GHz]</i>
<i>Insertion loss:</i>	<i>≤ 0.25dB</i>
<i>Insulation resistance:</i>	<i>≥ 5000MΩ</i>
<i>Test voltage:</i>	<i>2500 V rms</i>
<i>Working voltage:</i>	<i>1400 V rms</i>
<i>Contact resistance:</i>	
1). <i>Centre contact:</i>	<i>1.0 mΩ</i>
2). <i>Outer conductor:</i>	<i>0.25 mΩ</i>

Environmental data:

<i>Temperature rating:</i>	<i>-65 ° C to +165 ° C</i>
<i>52/ 95/EQ(RoHS):</i>	<i>Compliant</i>

Mechanical data:

<i>Mating cycles:</i>	<i>≥ 500</i>
<i>Center contact captivation(axial):</i>	<i>≥ 28 N</i>
<i>Coupling nut retention:</i>	<i>≥ 450 N</i>
<i>Coupling test torque:</i>	<i>≤ 1.7 Nm</i>
<i>Recommended torque:</i>	<i>0.7 Nm to 1.1 Nm</i>

Suitable cables:

N/A